

## Solar Wireless Professional Touch Screen Weather Station with PC Interface AW002

- สามารถบันทึกข้อมูลเชื่อมต่อกับคอมพิวเตอร์ได้
- บันทึกข้อมูลได้ 4,080 ค่า
- ตั้งค่าความละเอียดในการบันทึกข้อมูลได้ตั้งแต่ 5-240 นาที

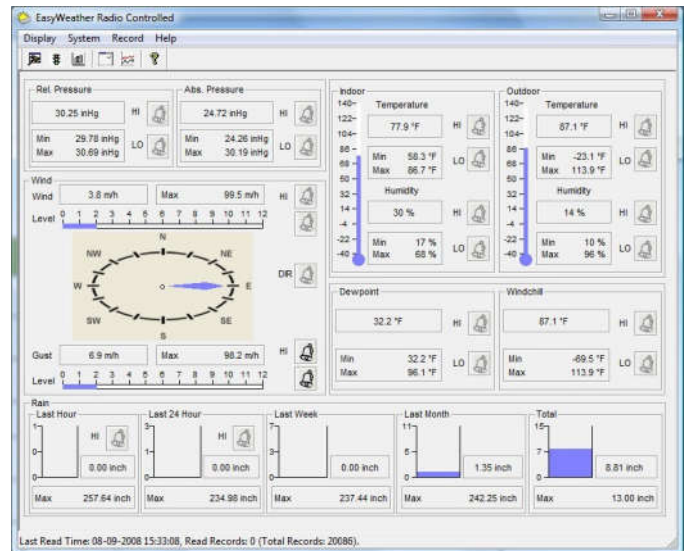
### Features:

1. Touch screen panel
2. USB port for easy connection to your PC
3. All the weather data from the base station and weather history data with user adjustable measuring intervals can be recorded and uploaded to your PC
4. Free PC software for transfer weather data to PC Software
5. Rainfall data (inches or millimeters): 1-hour, 24-hour, one week, one month and total since last reset.
6. Wind chill and Dew point temperature display ( °F or °C)
7. Records min. and max. wind chill and Dew point with time and date stamp
8. Wind speed (mph, m/s, km/h, knots, Beaufort)
9. Wind direction display with LCD compass
10. Weather forecast tendency arrow
11. Weather alarm modes for: a) Temperature b) Humidity c) Wind chill d) Dew point e) Rainfall f) Wind speed g) Air pressure h) Storm warning
12. Forecast icons based on changing barometric pressure
13. Barometric pressure (inHg or hPa) with 0.1hPa resolution
14. Wireless outdoor and indoor humidity (% RH)
15. Records min. and max. humidity with time and date stamp
16. Wireless outdoor and indoor temperature (°F or °C)
17. Records min. and max. temperature with time and date stamp
18. Receive and displays the radio controlled time and date (WWVB, DCF version available)
19. 12 or 24-hour time display
20. Perpetual calendar
21. Time alarm, Time zone setting
22. High light LED backlight
23. Wall hanging or free standing
24. Synchronized instant reception
25. Low power consumption (over 2 years battery life for transmitter)



**Specifications:**

- Outdoor temperature range: -40.0 °C to + 65.0 °C (-40 °F to +149 °F)
- Indoor temperature range: 0 °C to + 50.0 °C (32 °F to +122 °F)
- Humidity range: 10% to 99% (1% resolution)
- Rain volume display: 0 ~ 9999mm (show OFL if outside range); Resolution: 0.3mm (if rain volume < 1000mm); 1mm (if rain volume > 1000mm)
- Wind speed: 0~100mph (show OFL if outside range)
- Measuring range air pressure: 27.13inHg - 31.89inHg; Resolution: 0.01inHg
- Alarm duration: 120 sec
- Transmission range up to 100m (330 feet)
- Transmission frequency: 433MHz



**Set includes:**

- Receiver
- Four outdoor sensors: thermo-hydro transmitter, wind speed sensor, wind direction sensor and rain sensor

